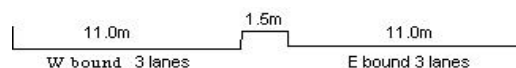
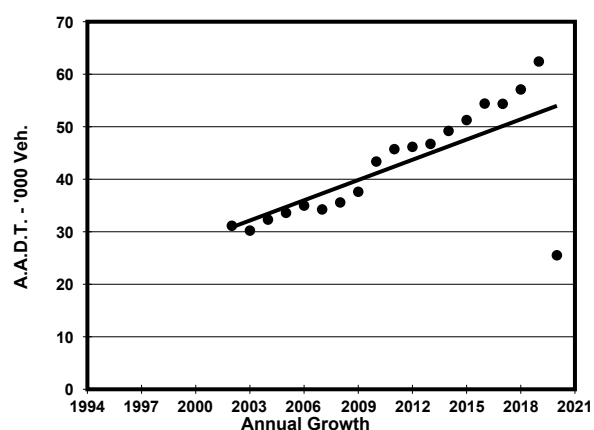
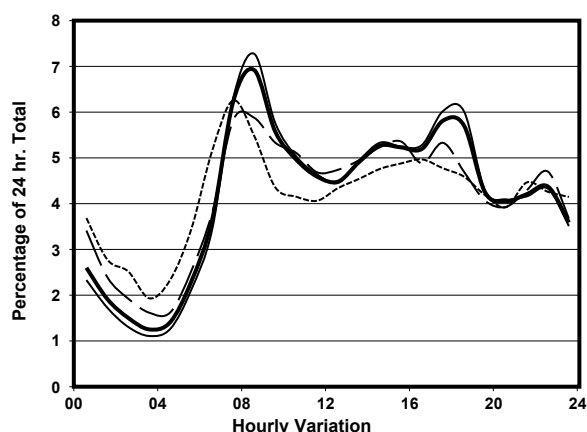
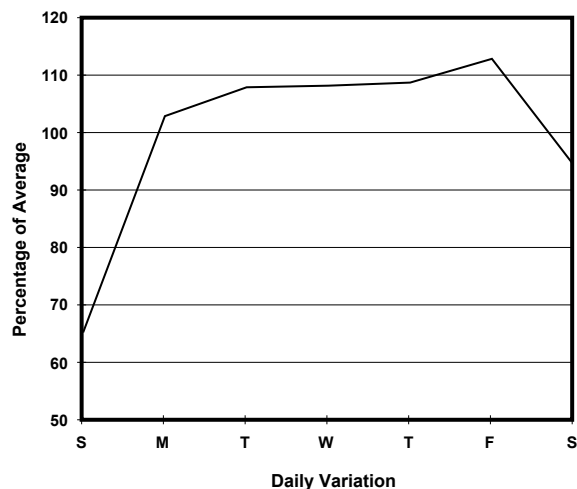
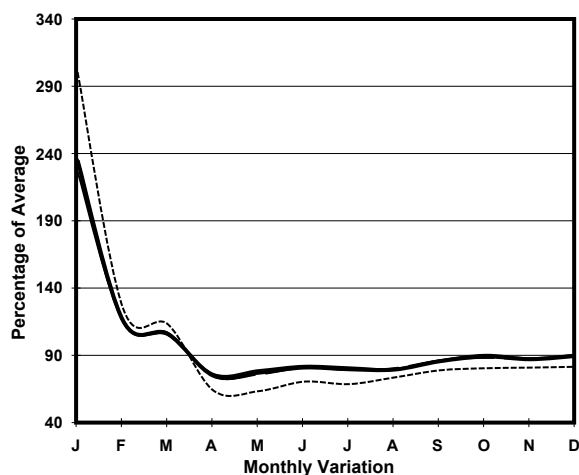


YEAR 2020
CORE STATION 5031
ROAD NETWORK MAJOR
ROAD TYPE EXPRESSWAY

LINK NORTH LANTAU HIGHWAY (from TUNG CHUNG
EASTERN INT to WESTERN END AT CHEK LAP KOK)



1. TRAFFIC FLOW VARIATION AND GROWTH



— All day - - - - Mon. - Fri. Sat. - . - . - Sun.

2. TRAFFIC CHARACTERISTICS (BY DIRECTION)

Parameter	All - Day	Mon. - Fri.	Sat.	Sun.
EAST BOUND				
A.A.D.T.	12740	13950	11970	8920
R 12 / 24 - %	62.2	63.5	59.5	55.8
R 16 / 24 - %	80.6	82	77.4	73.3
AM Peak Hour	0800-0900	0800-0900	0800-0900	0800-0900
One-way flow at AM peak hour	560	590	550	470
T - % (AM)	-	-	-	-
PM Peak Hour	1800-1900	1800-1900	1700-1800	1600-1700
One-way flow at PM peak hour	960	1140	760	490
T - % (PM)	-	-	-	-
Prop.of commercial vehicles - 16 hr.	-	-	-	-
WEST BOUND				
A.A.D.T.	12780	14020	11950	8890
R 12 / 24 - %	67.5	69.1	64.6	58.5
R 16 / 24 - %	83	84.4	80.6	74.7
AM Peak Hour	0800-0900	0800-0900	0700-0800	0700-0800
One-way flow at AM peak hour	1210	1440	930	670
T - % (AM)	-	-	-	-
PM Peak Hour	1600-1700	1700-1800	1600-1700	1600-1700
One-way flow at PM peak hour	590	650	530	400
T - % (PM)	-	-	-	-
Prop.of commercial vehicles - 16 hr.	-	-	-	-

3. OTHER INFORMATION AND COMMENT